

HAFCO WOODMASTER

W317

CD-2

CANISTER DUST COLLECTOR



IMPORTANT SAFETY RULES FOR DUST COLLECTORS

WARNING: Basic precautions should always be followed when using your dust collector. To reduce the risk of injury, electrical shock or fire, comply with the safety rules listed below:

1. READ and understand the instruction manual before operating the dust collector.
2. DO NOT leave the dust collector plugged into the electrical outlet. Unplug dust collector from outlet when not in use and before servicing, changing bags, unclogging and cleaning.
3. ALWAYS turn the power switch "OFF" before unplugging the dust collector.
4. WARNING: TO REDUCE THE RISK OF ELECTRICAL SHOCK do not use outdoors or on wet surfaces. Use for dry pickup only!
5. FOLLOW all electrical and safety codes, including the National Electric Code (NEC) and the Occupational Safety and Health Regulations (OSHA). Qualified personnel should make all electrical connections and wiring only.
6. DO NOT use the dust collector to pick up flammable or combustible liquids, such as gasoline. NEVER use the dust collector near any flammable or combustible liquids.
7. USE the dust collector to pick up wood materials only. DO NOT use the dust collector to pick up metal shavings, dust, water, or parts.
8. NEVER use the dust collector to dissipate fumes or smoke. NEVER pick-up anything that is burning or smoking, such as cigarettes, matches or hot ashes.
9. USE only as described in this manual.
10. DO NOT pull the dust collector by the power cord. NEVER allow the power cord to come in contact with sharp edges, hot surfaces, oil or grease.
11. DO NOT unplug the dust collector by pulling on the power cord. ALWAYS grasp the plug, not the cord.
12. DO NOT handle the plug or dust collector with wet hands.
13. REPLACE a damaged cord immediately. DO NOT use a damaged cord or plug. If the dust collector is not operating properly, or has been damaged, left outdoors or has been in contact with water, return it to an Authorized Service Center for service.
14. DO NOT use the dust collector as a toy. DO NOT use near or around children.
15. DO NOT insert fingers or foreign objects into the dust intake ports. Keep hair, loose clothing, fingers, and all body parts away from openings and moving parts of the dust collector.
16. DO NOT use the dust collector without a filter bag and dust collection bag in place and properly secured.
17. DO NOT operate the dust collector with unused dust intake ports uncapped. ALWAYS cover exposed dust intake ports.
18. PERIODICALLY INSPECT dust and filter bags for any cuts, rips or tears. NEVER operate the dust collector with a damaged bag or vacuum hose.
19. The dust collector is designed for home use or light commercial duty ONLY!
20. CONNECT dust collector to a properly grounded outlet only. See Grounding Instructions.

SAVE THESE INSTRUCTIONS

GROUNDING INSTRUCTIONS

The appliance must be grounded, if it should malfunction or breakdown, grounding provides a path of least resistance for electric current to reduce the risk of electric shock. This appliance is equipped with a cord having equipment-ground conductor and grounding plug. The plug must be inserted into an appropriate outlet that is properly installed and grounded in accordance with all local codes and ordinances.

WARNING – Improper connection of the equipment-grounding conductor can result in a risk of electric shock. Check with a qualified electrician or service person if you are in doubt as to whether the outlet is properly grounded. Do not modify the plug provided with the appliance – if it will not fit the outlet; have a proper outlet installed by a qualified electrician.

For grounded, cord-connected appliances:

This appliance is for use on a circuit having a normal rating more than 120 volt and is factory-equipped with a specific electric cord and plug to permit connection to a proper electric circuit. Make sure that the appliance is connected to an outlet having the same configuration as the plug. No adaptor should be used with this appliance. If the appliance must be reconnected for use on a different type of electric circuit, qualified service personnel should make the reconnection.

For a permanently connected appliance:

This appliance must be connected to a grounded metal, permanent wiring system; or an equipment-grounding conductor must be run with the circuit conductors and connected to the equipment grounding terminal or lead on the appliance.

INVENTORY LIST



A. Reducing Collector	M. N Type Handle
B. Round Collector	N. Lower Leg
C. 7" * 4" Y-adapter	O. Upper Leg
D. Housing Cover	P. PE Bag (Small)
E. Connecting Bracket	Q. Lower Dust Drum
F. Main Housing Assembly	R. Upper Dust Drum
G. 8" Hose	S. PE Bag (Big)
H. Round Clamp (L)	T. Switch Plate
I. Round Clamp(S)	U. Caster
J. 1-3/4" Hose Clamp	V. Ball Caster

Machine Assembly



Step 1. Assemble Legs

Connect the upper leg with connecting bracket by 5/16" button HD Screw

Connect the Lower Leg with connecting bracket by 5/16" button HD Screw



Screw on the swivel castors to the bottom each leg

Step 2 Fit legs to body

Use the packaging removed out of the carton under the upside down main unit to steady it to assemble the legs on.

The use of a soft face hammer to tap the legs on the bracket will assist.

Fit the end bolts first

Then push leg in towards the unit to fit the upper ones





Step 3 Round Collector Assembly

Place the Round Collector with main Housing as photo fix by M5 x 10 socket head cap screws ., Note the position of the small pipe coming out and the large inlet pipe in the side of the Collector.

Step 4 Fit switch

Assemble the Magnetic Switch
Place the Magnetic Switch under the Main Housing as photo and fixing by 5/16" Flange bolt.



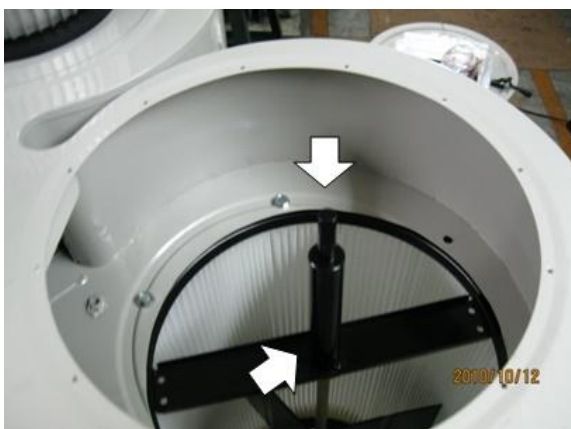
Step 5 Assembly Canister with Main Housing

Carefully turn dust collector on its side to assist in the assembly of the main filter to the housing
Use 6 x Flange head 5/16" x 3/4" long Whitworth bolts supplied.



Step 6 Turn unit upright onto its Legs now!

3 People will be needed to do this to avoid damage to Legs of machine.



Step 7 Assemble Canister Filter Spindle .

Place the connecting Spindle on the Canister spindle as photo and fix by 2 pcs M6 Cap Screw



Step 8 Fit top lid

Please the main Housing cover with Main Housing and fit as photo M5 x 10 socket head cap screws.



Step 9 Assembly canister filter cleaning Handle

Place the N Type Handle on the Canister and fix by the M6 set Screw.



Step 10 Assembly Y-Adaptor

Fit as shown and fasten with 3 x 3/16" Round Head screws



Step 11 Assemble dust drum

Assemble Dust Drum

Fix the 2" Ball Caster under the lower dust drum as photo



Step 12.

Place the upper dust drum with lower dust drum as photo and connecting by the big round clamp. Fix the Round Clamp by 1/4" * 4" L Hex Screw and Nut. When fitting top drum half on top of bottom base centralize it the best you can then fit clamp and tighten it progressively while lightly tapping on the clamp ring with a soft face hammer around the outside.



Step 13.

Fit Handle to Drum using 2 off 1/4" x 3/4" long Truss head bolt as shown, with Washer and dome nut fitted on inside.



Step 14.

Please the big PE Bag inside the dust drum. And try to get air between the Drum and PE bag out as much as better as photo.



Step 15 Assemble reducer cone to drum lid

Assemble Lid-Flexible hose and top cone as shown. Noting the position of the earth wire coming of cone is at rear of lid assembly

The hose is a tight fit and the careful use of a pair of pliers and or screwdriver as a lever will assist in its assembly!



Step 16

Drum Lid open system cable fixing

Pull up one of two Drum Lid open system cable and using the 1/4 Hex bolt to fixing on the screw hold of reducing collector and tighten from inside by the 1/4" nylock nut.

Do as above method to fix the other cable



Step 17

Fit Static Earth wire

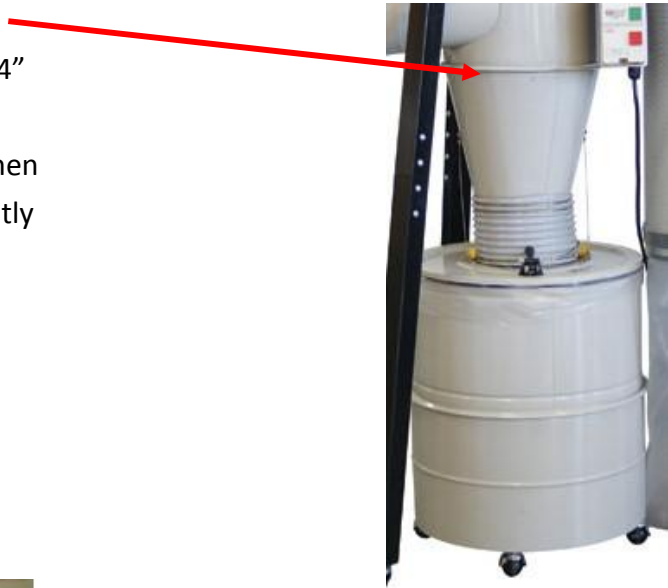
Place this assembly on top of the mobile collection drum

Step 18 Reducer Collector Assembly

Wheel the Drum/lid assembly under the machine with the lid lever to the front of machine (Switch side)

Place the Reducing Collector with Round Collector as photo. And connecting by small Round Clamp fix by 1/4" *4" L Hex Screw and 1/4" Nut

When fitting centralize it the best you can then fit clamp and tighten it progressively while lightly tapping on the clamp ring with a soft face hammer around the outside



Step 19 Small PE Bag Installation_

Place the small PE bag as the photo on the canister button and fixing by the Belt clamp.



Step 20 Assemble the 1-1/2" Hose_

Step 1.

Slide the 1-1/2" hose as photo on the 38mm tube of the round collector and fix by the 1-3/4" hose clamp.



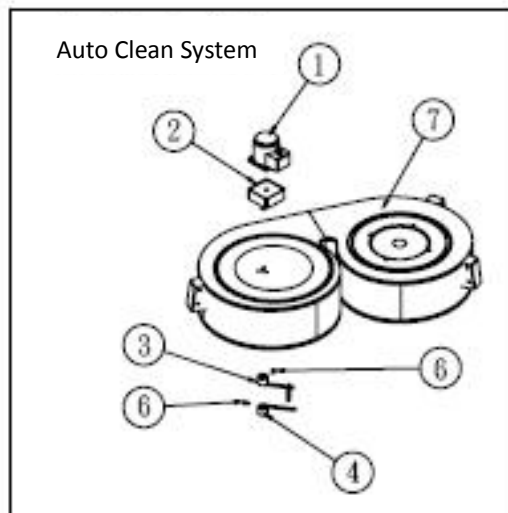
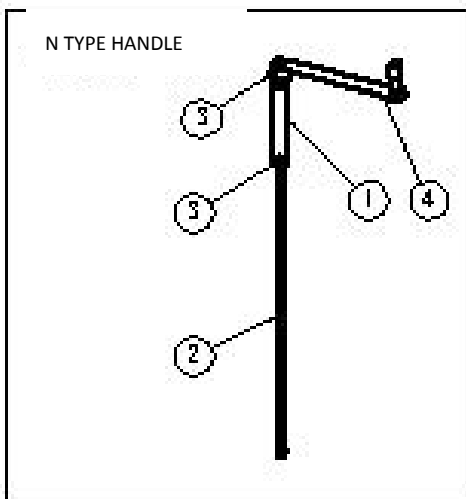
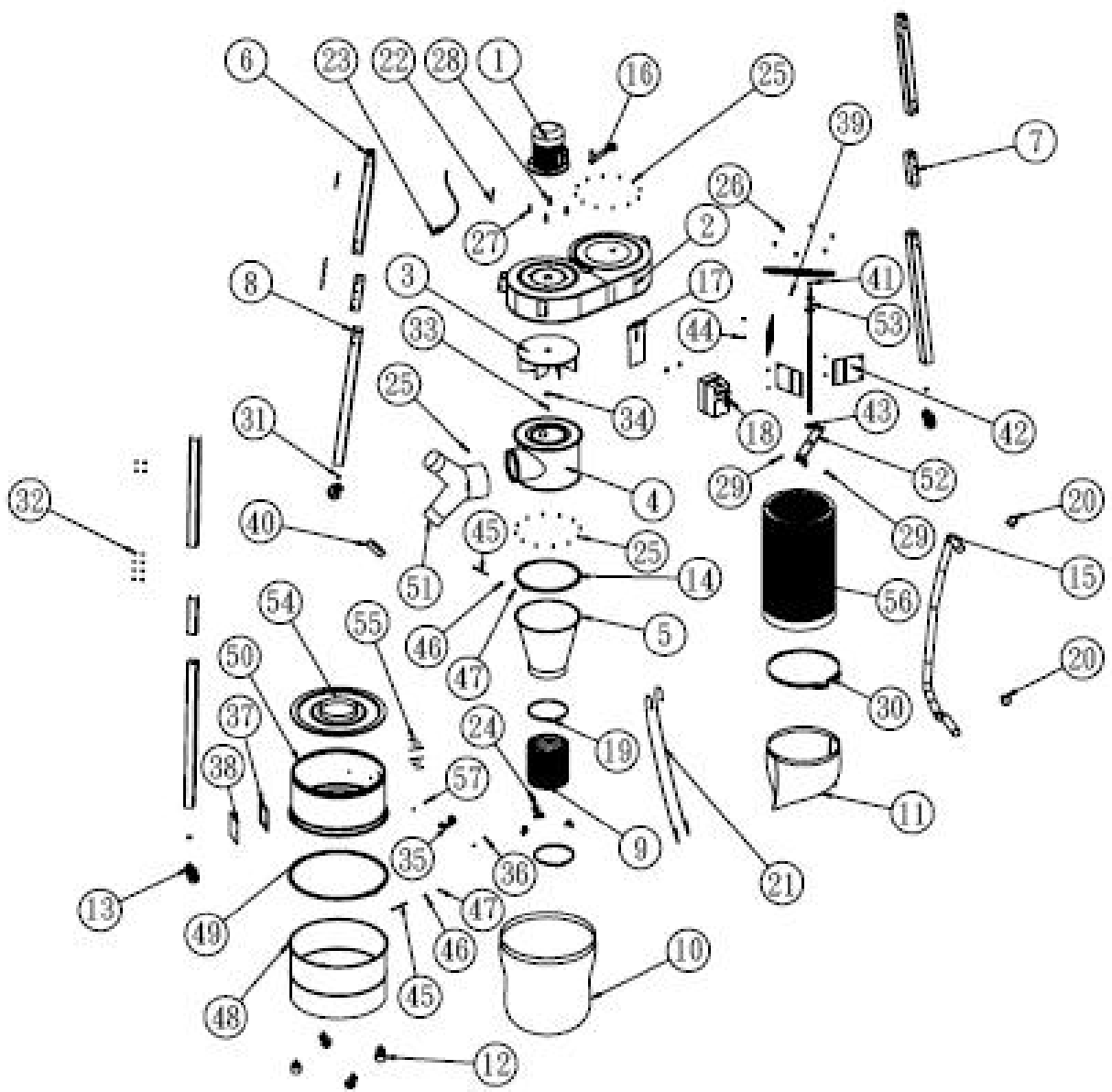
Step 21.

Slide the 1-1/2" hose the other side as photo on the 38mm tube of the dust drum and fix by the 1-3/4" hose clamp.

Now . The cyclone is ready for running testing



Part Diagram



Part List

ITEM NO.	Description	Q'TY
1	MOTOR	1
2	COLLECTOR BODY SET	1
3	12"-3/4" IMPELLER(2HP&3HP)	1
4	COLLECTOR	1
5	REDUCING CONNECTOR	1
6	FRONT SUPPORT LEG	3
7	□ TYPE CONNECTOR BOARD	3
8	LOWER REAR SUPPORT LEG	3
9	8" HOSE	1
10	LARGE PLASTIC BAG	1
11	SMALL PLASTIC BAG	1
12	DRUM SUPPORT WHEEL	4
13	WHEEL	3
14	CLAMP	1
15	HOSE	1
16	HANDLE	1
17	MAGNETIC SWITCH BOARD	1
18	MAGNETIC SWITCH 2HP	1
19	8" HOSE CLAMP	2
20	1-3/4" HOSE CLAMP	2
21	1.5mm WIRE	2
22	MOTOR CORD	1
23	POWER CORD	1
24	OPEN DEVICE	1
25	BOTTOM HEAD SCREW 3 / 1 6 x 1	31
26	5/16"*1/2"HEX HEAD SCREW	8
27	3/8"*1-1/2"HEX HEAD SCREW	4
28	3/8" NUTS	4
29	PHILLIPS HEAD SCREWM5_10mm	10
30	370 BELT CLAMP	1
31	1/2" NUTS	3
32	HEX SOCKET SCREW 5/16"	36
33	HEX SOCKET SCREW M6_16mm	1
34	WASHER	1
35	HANDLE	1
36	NUTS 1 / 4	2
37	PHILLIPS HEAD SCREW 1 / 4	2

38	SPONGE	1
39	CANISTER WINDOW	1
40	M5 RIVET	1
41	CAP	1
42	BUSHING	1
43	RUBBER FLAP	3
44	BEAR FIXING BOARD	2
45	HEX. HEAD BOLT M6x10L	6
46	PHILLIPS HEAD SCREW 1/4"x4"	2
47	FLAT WASHER 1/4" x 1 8	2
48	1/4" NUT	2
49	LOWER CANISTER	1
50	BLET CLAMP	1
51	UPPER DRUM 150H	1
52	Y-INLET	1
53	LOWER FIXING BOARD	2
54	CANISTER SPINDLE	1
55	200H DRUM UPPER COVER	1
56	RIVET	8
57	CANISTER	1

OPTION

AUTO

ITEM NO.	PARTS LIST	Q'TY
1	MOTOR	1
2	REDUCTION DEVICE	1
3	UPPER SWEEP	1
4	LOWER SWEEP	1
5	CANISTER SPINDLE	1
6	HEX. HEAD BOLT M6_10mm	2
7	B171-006 COLLECTOR BODY	1

OPTION

HAND

ITEM NO.	PARTS LIST	Q'TY
1	SHAFT COUPLING	1
2	MAIN SPINDLE	1
3	HEX. HEAD BOLTM6_10mm	2

WARNING

General Machinery Safety Instructions

Machinery House
requires you to read this entire Manual before using this machine.

- 1. Read the entire Manual before starting machinery.** Machinery may cause serious injury if not correctly used.
- 2. Always use correct hearing protection when operating machinery.** Machinery noise may cause permanent hearing damage.
- 3. Machinery must never be used when tired, or under the influence of drugs or alcohol.** When running machinery you must be alert at all times.
- 4. Wear correct Clothing.** At all times remove all loose clothing, necklaces, rings, jewelry, etc. Long hair must be contained in a hair net. Non-slip protective footwear must be worn.
- 5. Always wear correct respirators around fumes or dust when operating machinery.** Machinery fumes & dust can cause serious respiratory illness. Dust extractors must be used where applicable.
- 6. Always wear correct safety glasses.** When machining you must use the correct eye protection to prevent injuring your eyes.
- 7. Keep work clean and make sure you have good lighting.** Cluttered and dark shadows may cause accidents.
- 8. Personnel must be properly trained or well supervised when operating machinery.** Make sure you have clear and safe understanding of the machine you are operating.
- 9. Keep children and visitors away.** Make sure children and visitors are at a safe distance for you work area.
- 10. Keep your workshop childproof.** Use padlocks, Turn off master power switches and remove start switch keys.
- 11. Never leave machine unattended.** Turn power off and wait till machine has come to a complete stop before leaving the machine unattended.
- 12. Make a safe working environment.** Do not use machine in a damp, wet area, or where flammable or noxious fumes may exist.
- 13. Disconnect main power before service machine.** Make sure power switch is in the off position before re-connecting.
- 14. Use correct amperage extension cords.** Undersized extension cords overheat and lose power. Replace extension cords if they become damaged.
- 15. Keep machine well maintained.** Keep blades sharp and clean for best and safest performance. Follow instructions when lubricating and changing accessories.
- 16. Keep machine well guarded.** Make sure guards on machine are in place and are all working correctly.
- 17. Do not overreach.** Keep proper footing and balance at all times.
- 18. Secure workpiece.** Use clamps or a vice to hold the workpiece where practical. Keeping the workpiece secure will free up your hand to operate the machine and will protect hand from injury.
- 19. Check machine over before operating.** Check machine for damaged parts, loose bolts, Keys and wrenches left on machine and any other conditions that may effect the machines operation. Repair and replace damaged parts.
- 20. Use recommended accessories.** Refer to instruction manual or ask correct service officer when using accessories. The use of improper accessories may cause the risk of injury.
- 21. Do not force machinery.** Work at the speed and capacity at which the machine or accessory was designed.
- 22. Use correct lifting practice.** Always use the correct lifting methods when using machinery. Incorrect lifting methods can cause serious injury.
- 23. Lock mobile bases.** Make sure any mobile bases are locked before using machine.
- 24. Allergic reactions.** Certain metal shavings and cutting fluids may cause an allergic reaction in people and animals, especially when cutting as the fumes can be inhaled. Make sure you know what type of metal and cutting fluid you will be exposed to and how to avoid contamination.
- 25. Call for help.** If at any time you experience difficulties, stop the machine and call you nearest branch service department for help.

WARNING

Metal & Wood Dust Collector Safety Instructions

Machinery House
requires you to read this entire Manual before using this machine.

- 1. Maintenance.** Make sure the Dust collector is turned off and disconnect from the main power supply and make sure all moving parts have come to a complete stop before any inspection, adjustment or maintenance is carried out.
- 2. Dust collector Condition.** Dust collector must be maintained for a proper working condition. Never operate a Dust collector that has damaged or worn parts. Scheduled routine maintenance should be performed on a scheduled basis.
- 3. Inlet Hazard.** Do not place hands or tools near the open inlets during operation for any reason. The impeller could cause serious damage to body parts if touched while spinning.
- 4. Avoiding Entanglement.** Guards and dust bags must be used at all times. Remove loose clothing, belts, or jewelry items. Tie up long hair and use the correct hair nets to avoid any entanglement with the Dust collector.
- 5. Understand the machines controls.** Make sure you understand the use and operation of all controls.
- 6. Power outage.** In the event of a power failure during use of the Dust collector, turn off all switches to avoid possible sudden start up once power is restored.
- 7. Work area hazards.** Keep the area around the Dust collector clean from oil, tools, chips. Pay attention to other persons in the area and know what is going on around the area to ensure unintended accidents.
- 8. Hearing protection and hazards.** Always wear hearing protection as noise generated from dust collector can cause permanent hearing loss over time.
- 9. Dust Collector use.** This Dust Collector is designed to be used with wood & Metal only. Do not pick up material that can not safely pass through the impeller.
- 10. Fire Hazard.** Ensure machines and hoses are thoroughly cleaned inside and out of all wood dust and chips before using this machine for steel dust. Ensure the dust extraction hose used is heat resistant and flame retardant and a minimum length of 2 meters between machine and dust collector.
- 11. Bags & guards.** All safety bags and guards must be used at all times. Bags must be replaced when damaged.
- 12. Emptying bags hazard.** Always wear a respirator and safety glasses when emptying dust into approved containers and dispose of properly.
- 13. Wood dust may cause allergic reactions.** Make sure you know what type of dust you are exposed to as it may cause you an allergic reaction. Always wear an approved respirator.
- 14. Call for help.** If at any time you experience difficulties, stop the machine and call your nearest branch service department for help.

PLANT SAFETY PROGRAM

NEW MACHINERY HAZARD IDENTIFICATION, ASSESSMENT & CONTROL

Metal & Wood Dust Collector

Developed in Co-operation Between A.W.I.S.A and Australia Chamber of Manufactures
This program is based upon the Australian Worksafe Standard for Plant(NOHSC:1010-1994)

Item No.	Hazard Identification	Hazard Assessment	Risk Control Strategies <small>(Recommended for Purchase / Buyer / User)</small>
B	CRUSHING	LOW	Ensure dust collector is on level solid ground and in a safe place to avoid tipping.
C	CUTTING, STABBING, PUNCTURING	MEDIUM	Isolate power to machine prior to any checks or maintenance being carried out. Do not adjust or clean dust collector until fully stopped. Ensure hose remains fitted to prevent access to fan blade. Keep body parts away from moving parts.
H	ELECTRICAL	MEDIUM	All electrical enclosures should only be opened with a tool that is not to be kept with the machine.
M	HIGH TEMPERATURE or FIRE	MEDIUM	Ensure machines and hoses are thoroughly cleaned inside and out of all wood dust and chips before using this machine for steel dust. Ensure the dust extraction hose used is heat resistant and flame retardant and a minimum length of 2 meters between machine and dust collector
O	OTHER HAZARDS, NOISE.	LOW	Wear hearing protection as required.
Plant Safety Program to be read in conjunction with manufactures instructions			



www.machineryhouse.com.au



www.machineryhouse.co.nz

Authorised and signed by:
Safety officer:


.....
Manager:

.....

Revised Date: Aug-08